

Town of Dandridge

Accessibility Study



Prepared by The Architecture Collaborative

January 9, 2023

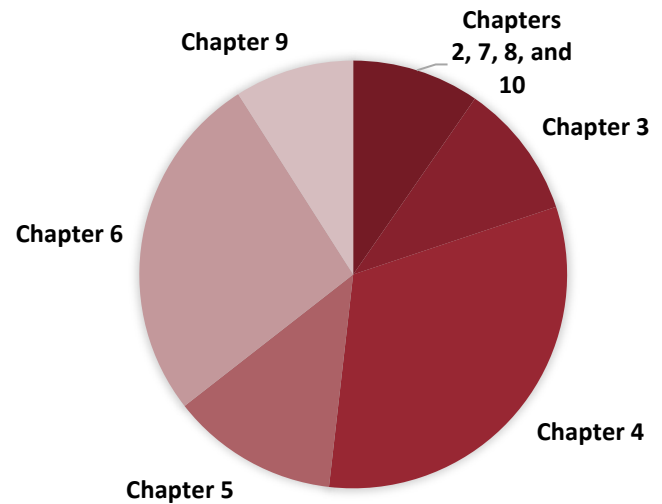
Table of Contents

Summary of Accessibility Non-Compliant Deficiencies	3
Graveyard Alley	4
Town Hall.....	8
Visitor Center.....	19
Library	21
Dock Restrooms.....	27
Sidewalks.....	28
Fire Station #2	32
Waterwater Plant Office.....	34
Wastewater Plant Lab	38
Public Works/Police Station	39
Fire Station #1	43
Baseball Concession / Restrooms Upper Fields.....	48
Football Concession / Restrooms	52
Football Ticket Booth	55
Baseball Concession/Restrooms Lower Fields	56
Community Center.....	58
Picnic Pavillion	60

Summary of Accessibility Non-Compliant Deficiencies

Below is a breakdown of observed deficiencies that are non-compliant with *2010 ADA Standards for Accessible Design*. Please note that this list is not a comprehensive summary of every deficiency.

- “Chapter 2: Scoping Requirements” – **5 Issues**
- “Chapter 3: Building Blocks” – **17 Issues**
- “Chapter 4: Accessible Routes” – **53 Issues**
- “Chapter 5: General Site and Building Elements” – **21 Issues**
- “Chapter 6: Plumbing Elements and Facilities” – **44 Issues**
- “Chapter 7: Communication Elements” – **2 Issues**
- “Chapter 8: Special Rooms, Spaces, and Elements” – **5 Issues**
- “Chapter 9: Built-in Elements” – **15 Issues**
- “Chapter 10: Recreational Facilities” – **4 Issues**



Location	Approx. # Deficiencies	Main Concerns
Town Hall (Page 8)	35	General Building and Accessible Routes
Library (Page 21)	19	Counter Heights
Fire Station #1 (Page 43)	14	Bathrooms
Baseball Concession / Restrooms Upper Fields (Page 48)	13	Counter Heights and Bathrooms
Graveyard Alley (Page 4)	12	Sidewalks
Sidewalks (Page 28)	11	Accessible Sidewalks and Correct Slope
Wastewater Plant Office (Page 34)	11	Counter Heights and Bathrooms
Public Works / Police Station (Page 39)	10	Accessible Routes and Bathrooms
Football Concessions / Restrooms (Page 52)	9	Restrooms
Visitor Center (Page 19)	6	Accessible Routes
Fire Station #2 (Page 32)	6	Bathrooms
Baseball Concession / Restrooms Lower Fields (Page 56)	6	Restrooms and Counter Height
Community Center (Page 58)	4	Parking Wheel Stops and Counter Height
Picnic Pavilion (Page 60)	3	Parking and Seating
Dock Restrooms (Page 27)	2	Parking
Wastewater Plant Lab (Page 38)	2	General Site
Football Ticket Booth	2	Counter Height

Graveyard Alley



Issue: Not graded for accessibility.
Fix: Reconfigure.

Reference Code: United States. (2010). "Chapter 4: Accessible Routes" in *2010 ADA Standards for Accessible Design*. Dept. of Justice.



Issue: Not graded for accessibility.
Fix: Reconfigure.

Reference Code: "Chapter 4: Accessible Routes"



Issue: Not graded for accessibility.
Fix: Reconfigure.

Reference Code: "Chapter 4: Accessible Routes"



Issue: Intersection needs an accessible demarcation entryway.

Fix: Configure for accessible entry.

Reference Codes: "Chapter 2: Scoping Requirements" and "Chapter 7: Communication Elements"



Issue: Sidewalk not accessible.

Fix: Reconfigure.

Reference Code: "Chapter 4: Accessible Routes"



Issue: Sidewalk not accessible.

Fix: Reconfigure.

Reference Code: "Chapter 4: Accessible Routes"



Issue: Sidewalk not accessible.
Fix: Reconfigure.

Reference Code: "Chapter 4: Accessible Routes"



Issue: Sidewalk not accessible.
Fix: Reconfigure.

Reference Code: "Chapter 4: Accessible Routes"



Issue: Sidewalk not accessible.
Fix: Reconfigure.

Reference Code: "Chapter 4: Accessible Routes"



Issue: Sidewalk not accessible.
Fix: Reconfigure.

Reference Code: "Chapter 4: Accessible Routes"



Issue: Sidewalk not accessible.
Fix: Reconfigure.

Reference Code: "Chapter 4: Accessible Routes"

Town Hall



Issue: Entrance not accessible.

Fix: Reconfigure.

Reference Code: Reference Code: "Chapter 3: Building Blocks" and "Chapter 5: General Site and Building Elements"



Issue: Sidewalk texture may be too deep.

Fix: Reconfigure.

Reference Code: "Chapter 3: Building Blocks"



Issue: Trash can impedes clear floor and turning requirements.

Fix: Reconfigure.

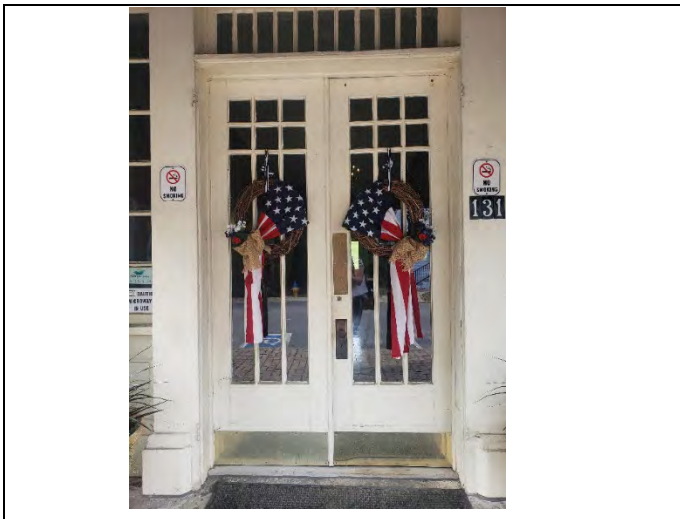
Reference Code: "Chapter 4: Accessible Routes"



Issue: Pot impedes clearance.

Fix: Reconfigure.

Reference Code: "Chapter 4: Accessible Routes"



Issue: Entryway not accessible.

Fix: Reconfigure.

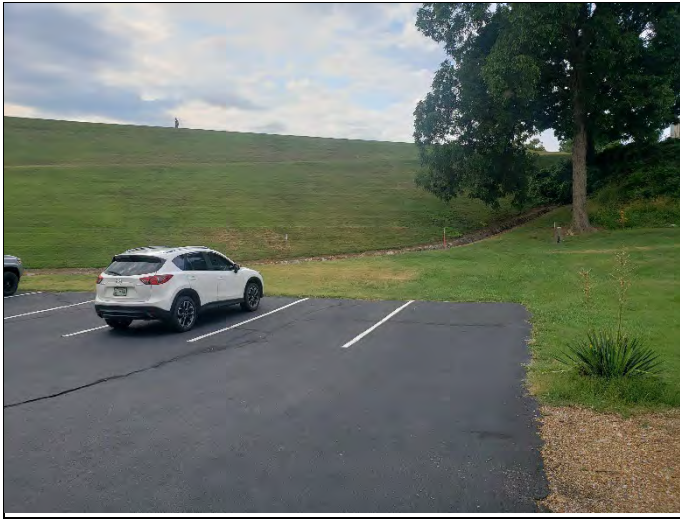
Reference Codes: "Chapter 3: Building Blocks" and "Chapter 4: Accessible Routes"



Issue: No accessible parking.

Fix: Add accessible parking.

Reference Code: "Chapter 2: Scoping Requirements"



Issue: No accessible parking.

Fix: Add accessible parking.

Reference Code: "Chapter 2: Scoping Requirements"



Issue: No accessible access to pavilion platform.

Fix: Provide access to platform.

Reference Code: "Chapter 5: General Site and Building Elements"



Issue: Stairs to pavilion not ADA.

Fix: Replace stairs.

Reference Code: "Chapter 5: General Site and Building Elements"



Issue: No access to upper floors.

Fix: Provide accessible entry to upper floors.

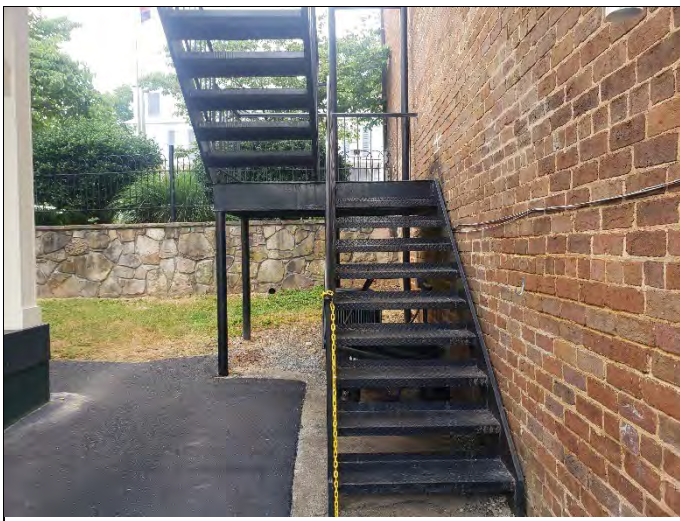
Reference Code: "Chapter 5: General Site and Building Elements"



Issue: No handrail at step.

Fix: Add a handrail.

Reference Code: "Chapter 5: General Site and Building Elements"



Issue: Staircase not accessible.

Fix: Provide an accessible staircase.

Reference Code: "Chapter 5: General Site and Building Elements"



Issue: Staircase not accessible.

Fix: Provide an accessible staircase.

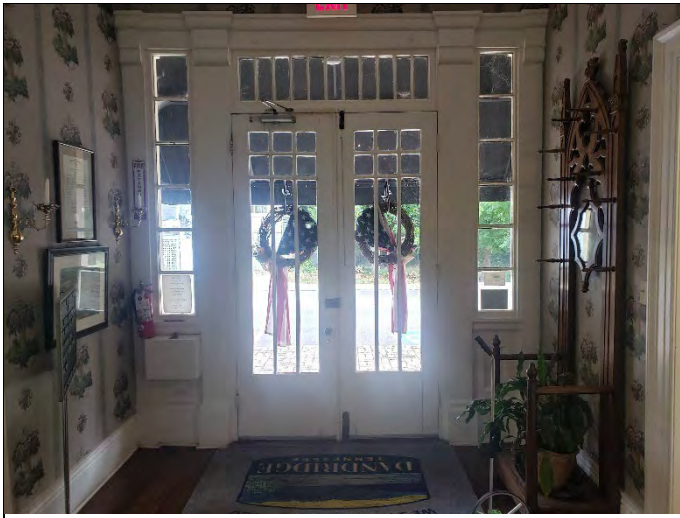
Reference Code: "Chapter 5: General Site and Building Elements"



Issue: Staircase and egress not accessible.

Fix: Provide an accessible staircase.

Reference Code: "Chapter 5: General Site and Building Elements"



Issue: Entryway not accessible.

Fix: Reconfigure.

Reference Codes: "Chapter 3: Building Blocks" and "Chapter 4: Accessible Routes"



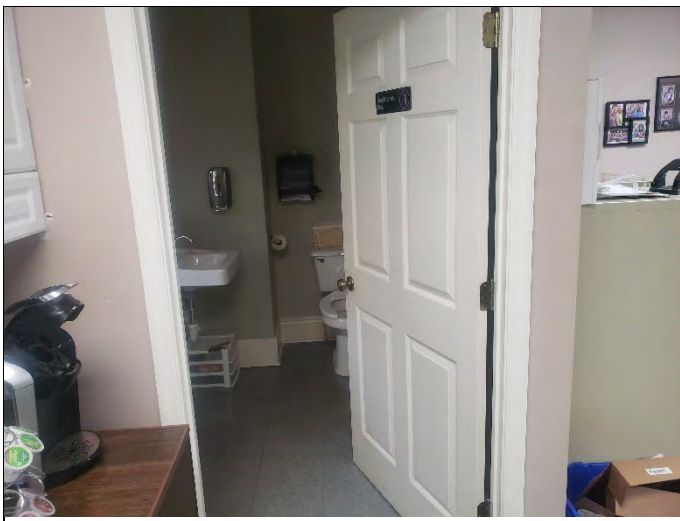
Issue: Threshold is not ADA.
Fix: Reconfigure threshold.

Reference Code: "Chapter 4: Accessible Routes"



Issue: Handrail not accessible.
Fix: Replace handrail.

Reference Code: "Chapter 5: General Site and Building Elements"



Issue: Clearance is not accessible.
Fix: Reconfigure bathroom.

Reference Code: "Chapter 6: Plumbing Elements and Facilities"



Issue: Not accessible.

Fix: Reconfigure.

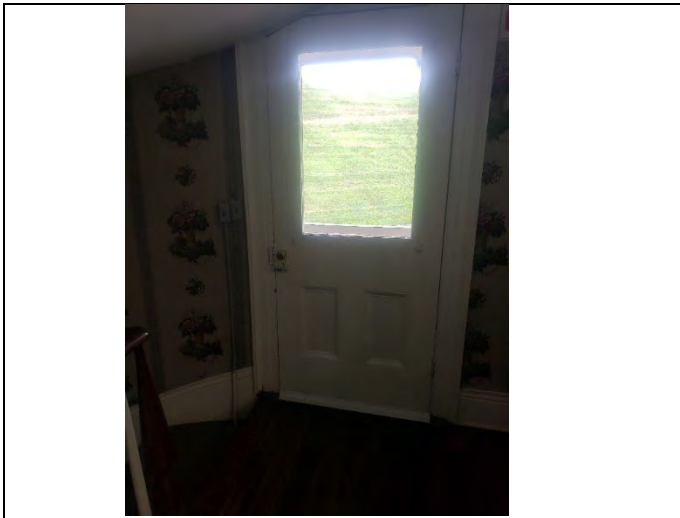
Reference Code: "Chapter 6: Plumbing Elements and Facilities"



Issue: Counter is not accessible.

Fix: Reconfigure.

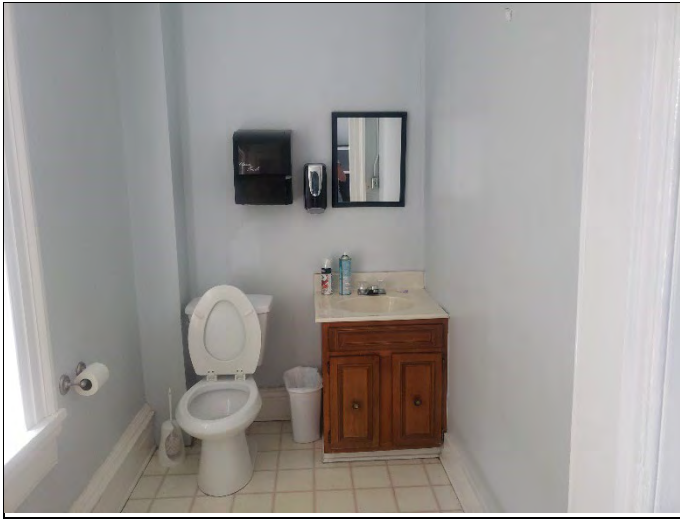
Reference Code: "Chapter 10: Recreational Facilities"



Issue: Rear door does not meet egress standards.

Fix: Reconfigure door.

Reference Code: "Chapter 4: Accessible Routes"



Issue: Not accessible.

Fix: Reconfigure.

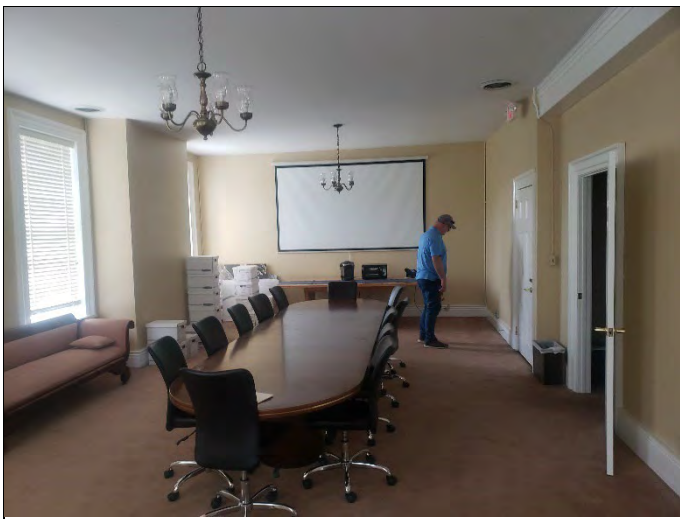
Reference Code: "Chapter 6: Plumbing Elements and Facilities"



Issue: Not accessible.

Fix: Reconfigure.

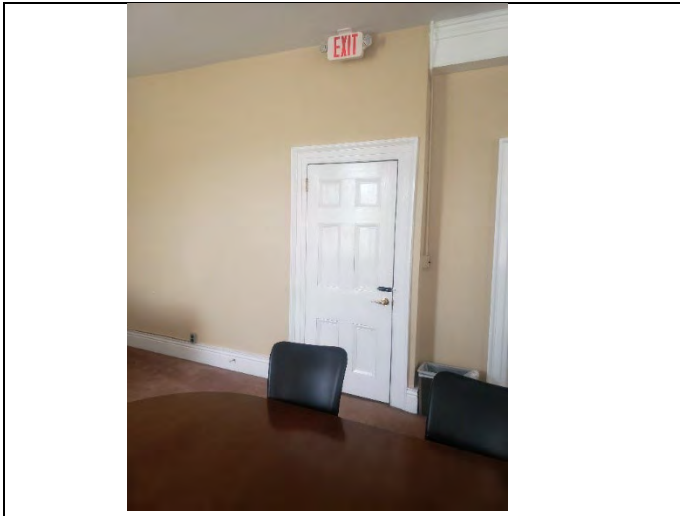
Reference Code: "Chapter 6: Plumbing Elements and Facilities"



Issue: Exit sign not ADA.

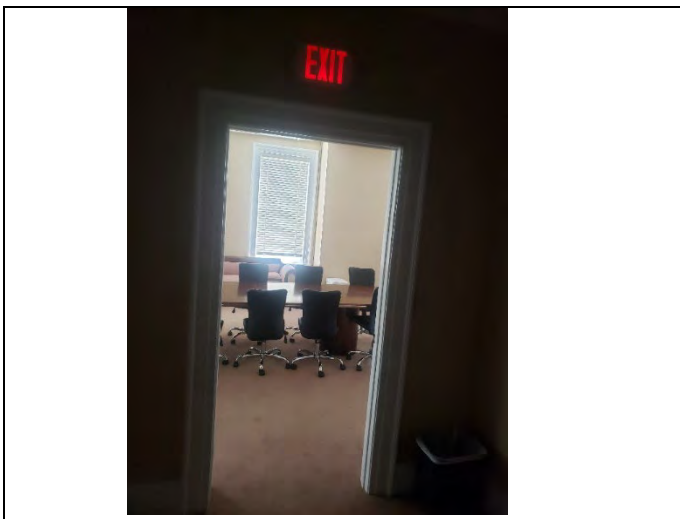
Fix: Replace exit sign.

Reference Code: "Chapter 3: Building Blocks"



Issue: Exit sign not ADA.
Fix: Replace exit sign.

Reference Code: "Chapter 3: Building Blocks"



Issue: Exit sign not ADA.
Fix: Replace exit sign.

Reference Code: "Chapter 3: Building Blocks"



Issue: Porch not accessible.
Fix: Reconfigure.

Reference Code: "Chapter 4: Accessible Routes"



Issue: Exit not accessible.

Fix: Reconfigure.

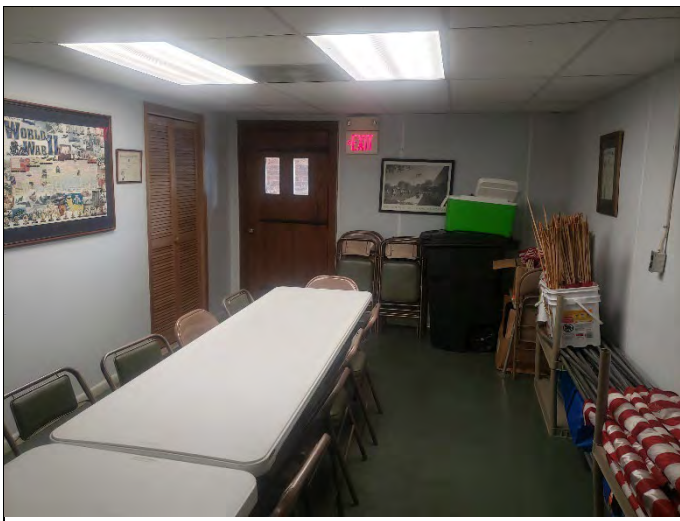
Reference Code: "Chapter 4: Accessible Routes"



Issue: Kitchen not ADA accessible.

Fix: Reconfigure.

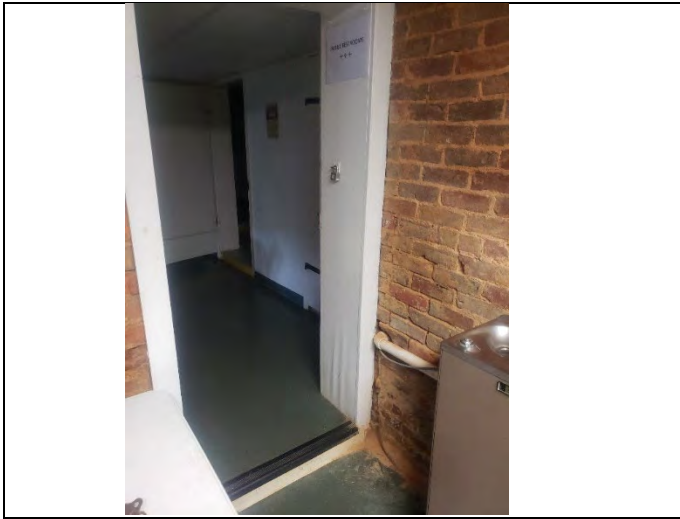
Reference Code: "Chapter 8: Special Rooms, Spaces, and Elements"



Issue: Egress not ADA compliant.

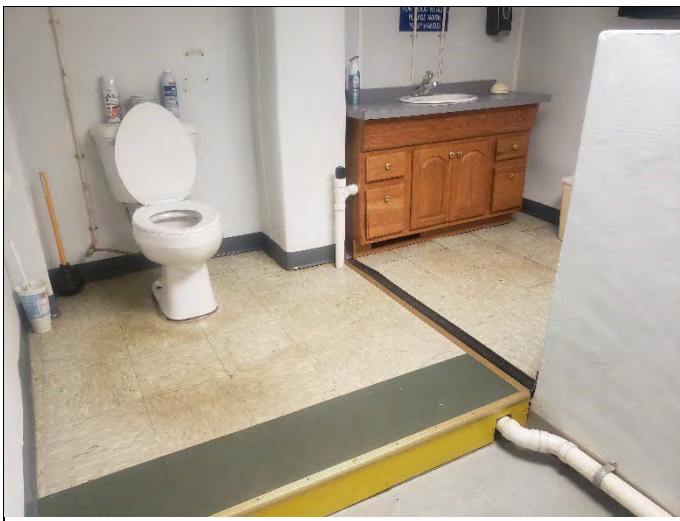
Fix: Provide an accessible exit.

Reference Code: "Chapter 4: Accessible Routes"



Issue: Bathroom not ADA accessible.
Fix: Reconfigure.

Reference Code: "Chapter 6: Plumbing Elements and Facilities"



Issue: Bathroom not ADA accessible.
Fix: Reconfigure.

Reference Code: "Chapter 6: Plumbing Elements and Facilities"



Issue: Bathroom not ADA accessible.
Fix: Reconfigure.

Reference Code: "Chapter 6: Plumbing Elements and Facilities"

Visitor Center



Issue: Driveway path is not of an accessible grade.

Fix: If planning on using the driveway as a walkway down to pavilion, the grade must be configured to a 5% slope.

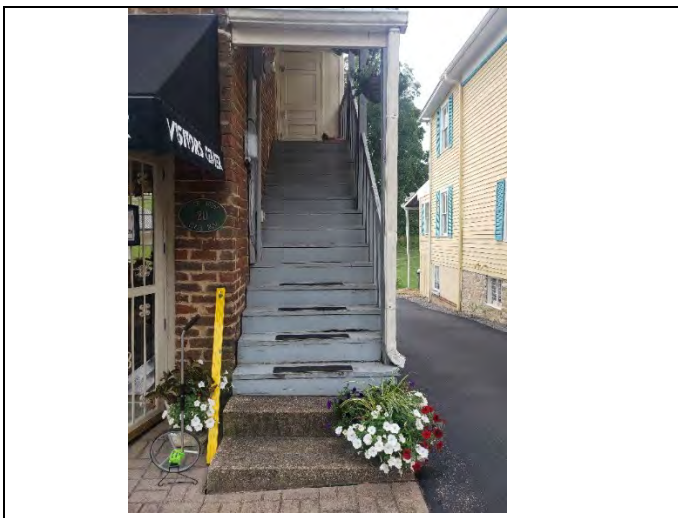
Reference Code: "Chapter 4: Accessible Routes"



Issue: Sidewalk not ADA.

Fix: Reconfigure.

Reference Code: "Chapter 4: Accessible Routes"



Issue: No accessible way to reach the upper floors.

Fix: Reconfigure.

Reference Code: "Chapter 4: Accessible Routes"



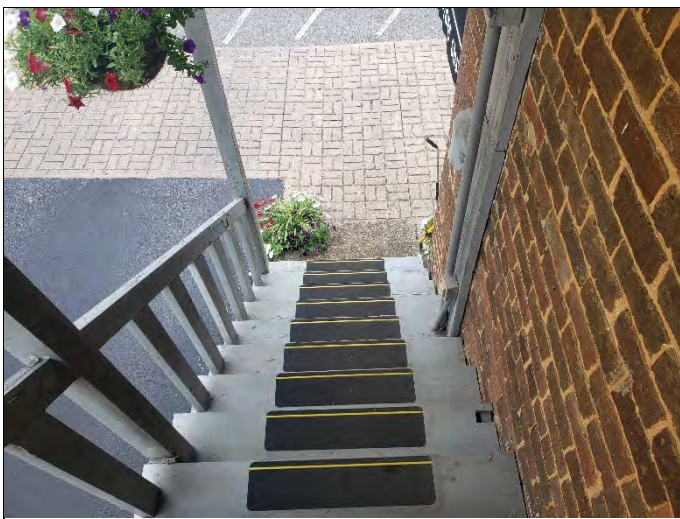
Issue: No accessible way to reach the upper floors.
Fix: Reconfigure.

Reference Code: "Chapter 4: Accessible Routes"



Issue: No accessible way to reach the upper floors.
Fix: Reconfigure.

Reference Code: "Chapter 4: Accessible Routes"



Issue: No accessible way to reach the upper floors.
Fix: Reconfigure.

Reference Code: "Chapter 4: Accessible Routes"

Library



Issue: Sidewalk slope is 5.8%, making it above the 5% ADA requirement.

Fix: Reconfigure sidewalk.

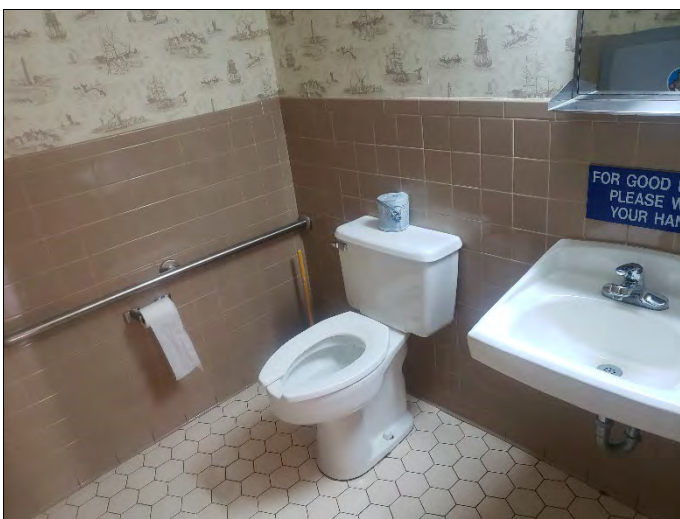
Reference Code: "Chapter 4: Accessible Routes"



Issue: Door hardware is not ADA.

Fix: Install lever door hardware to make doorway accessible.

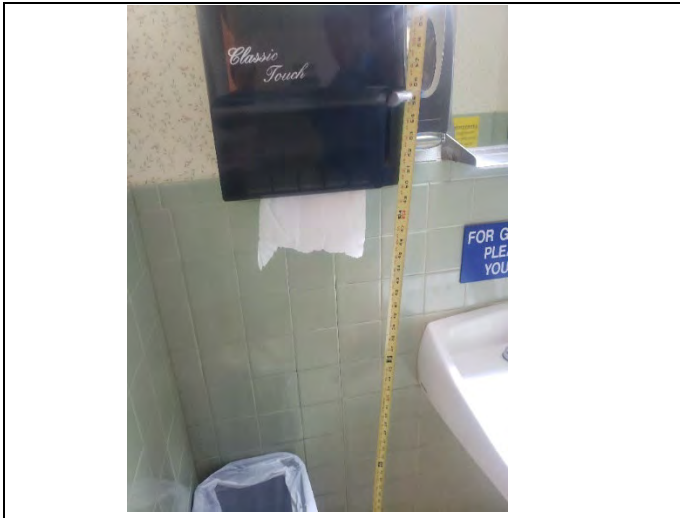
Reference Code: "Chapter 4: Accessible Routes"



Issue: Restroom not ADA.

Fix: Reconfigure.

Reference Code: "Chapter 6: Plumbing Elements and Facilities"



Issue: Mounted too high.

Fix: Move lower within ADA limits.

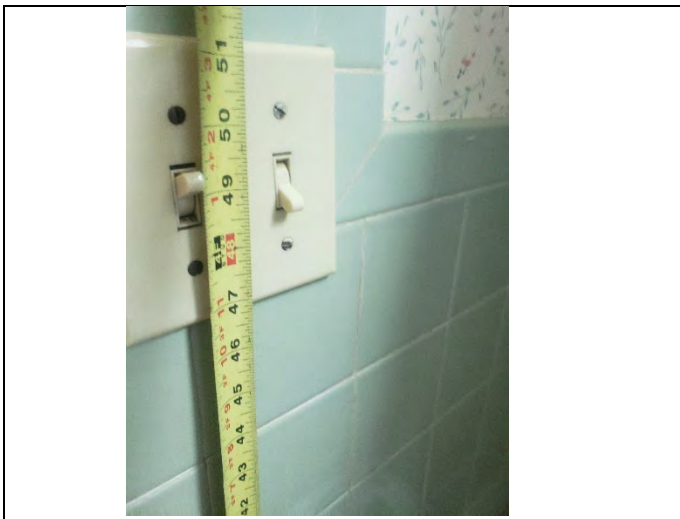
Reference Code: "Chapter 3: Building Blocks"



Issue: Mounted too high.

Fix: Move lower within ADA limits.

Reference Code: "Chapter 3: Building Blocks"



Issue: Mounted too high.

Fix: Move lower within ADA limits.

Reference Code: "Chapter 3: Building Blocks"



Issue: Entry to bathrooms not ADA.

Fix: Reconfigure.

Reference Code: "Chapter 4: Accessible Routes"



Issue: Low water cooler not provided.

Fix: Add additional water cooler.

Reference Code: "Chapter 6: Plumbing Elements and Facilities"



Issue: Door is not ADA.

Fix: Reconfigure with appropriate hardware.

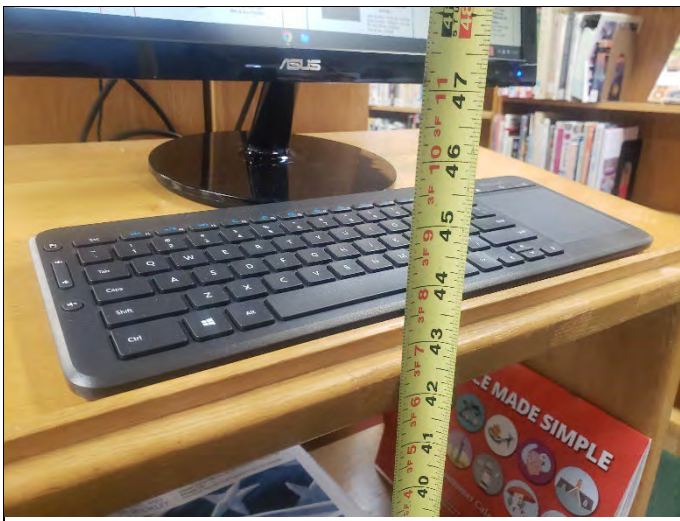
Reference Code: "Chapter 4: Accessible Routes"



Issue: Countertop is not ADA accessible.
Fix: Provide portion of service counter that is within the ADA limits.
Reference Code: "Chapter 10: Recreational Facilities"



Issue: Door exit not ADA.
Fix: Reconfigure.
Reference Code: "Chapter 4: Accessible Routes"



Issue: Desk is too high.
Fix: Provide a lower desk within ADA limits.
Reference Code: "Chapter 10: Recreational Facilities"



Issue: Not mounted within ADA reach limits.

Fix: Mount lower per ADA.

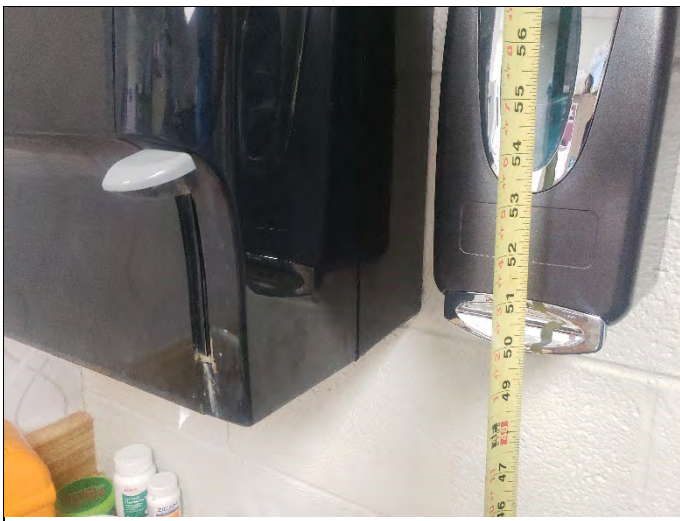
Reference Code: "Chapter 3: Building Blocks"



Issue: Ensure accessibility.

Fix: If found to be not accessible, reconfigure.

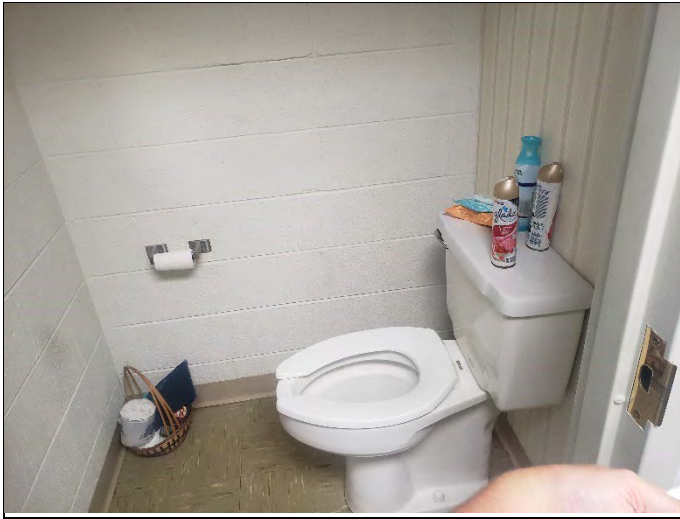
Reference Codes: "Chapter 6: Plumbing Elements and Facilities" and "Chapter 10: Recreational Facilities"



Issue: Mounted too high.

Fix: Lower within ADA limits.

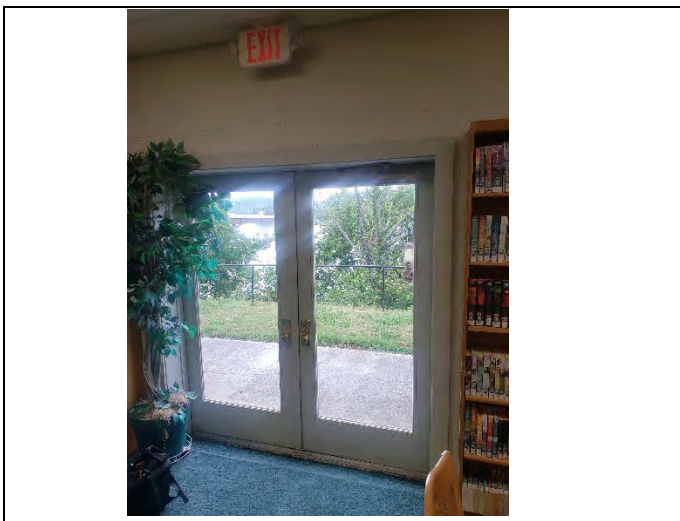
Reference Code: "Chapter 3: Building Blocks"



Issue: Bathroom not ADA accessible.

Fix: Reconfigure.

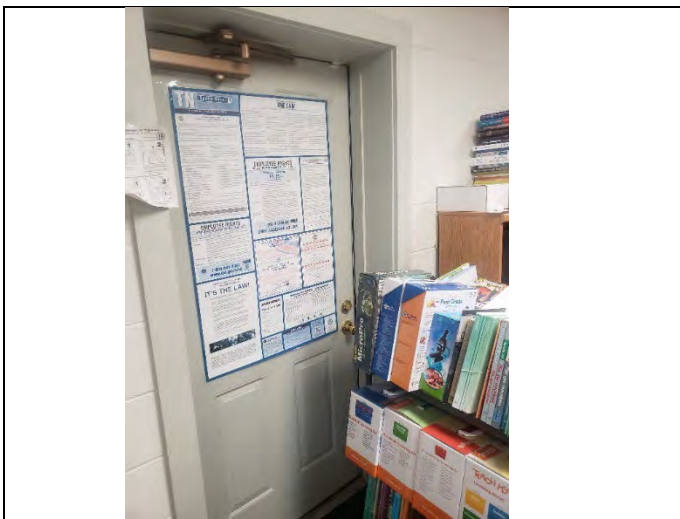
Reference Code: "Chapter 6: Plumbing Elements and Facilities"



Issue: Door is not ADA.

Fix: Reconfigure with appropriate hardware.

Reference Code: "Chapter 4: Accessible Routes"



Issue: Door not ADA.

Fix: Reconfigure.

Reference Code: "Chapter 4: Accessible Routes"

Dock Restrooms



Issue: Access aisle not marked.

Fix: Paint access aisle.

Reference Codes: "Chapter 3: Building Blocks" and "Chapter 5: General Site and Building Elements"

Sidewalks



Issue: Missing an ADA sidewalk.

Fix: Provide accessible sidewalk.

Reference Code: "Chapter 4: Accessible Routes"



Issue: Missing an ADA sidewalk.

Fix: Provide accessible sidewalk.

Reference Code: "Chapter 4: Accessible Routes"



Issue: Missing an ADA sidewalk.

Fix: Provide accessible sidewalk.

Reference Code: "Chapter 4: Accessible Routes"



Issue: Missing portion of ADA sidewalk.

Fix: Provide accessible sidewalk.

Reference Code: "Chapter 4: Accessible Routes"



Issue: Handrails not provided.

Fix: Install new handrails.

Reference Code: "Chapter 5: General Site and Building Elements"



Issue: Sidewalk not clear.

Fix: Ensure clear requirements.

Reference Code: "Chapter 4: Accessible Routes"



Issue: Missing an ADA sidewalk.

Fix: Provide accessible sidewalk.

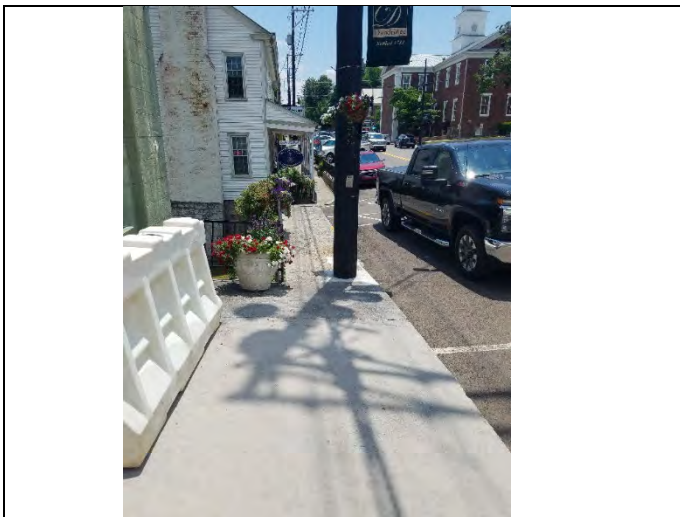
Reference Code: "Chapter 4: Accessible Routes"



Issue: Missing an ADA sidewalk.

Fix: Provide accessible sidewalk.

Reference Code: "Chapter 4: Accessible Routes"



Issue: Missing an ADA sidewalk.

Fix: Provide accessible sidewalk.

Reference Code: "Chapter 4: Accessible Routes"



Issue: Missing handrail.

Fix: Add handrail.

Reference Code: "Chapter 4: Accessible Routes"



Issue: Street crossing not ADA.

Fix: Provide an accessible crossing.

Reference Code: "Chapter 4: Accessible Routes"

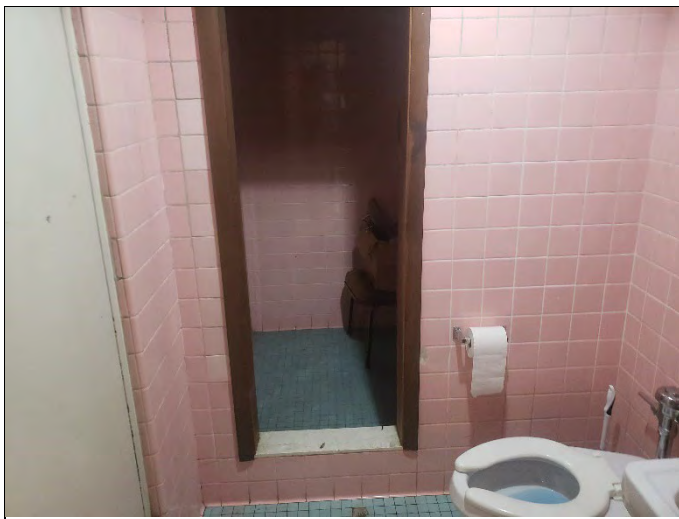
Fire Station #2



Issue: Bathroom not ADA.

Fix: Reconfigure.

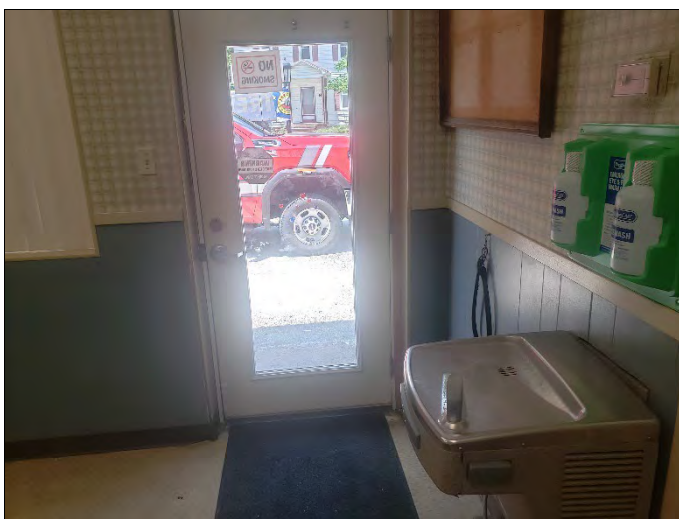
Reference Code: "Chapter 6: Plumbing Elements and Facilities"



Issue: Bathroom not ADA.

Fix: Reconfigure.

Reference Code: "Chapter 6: Plumbing Elements and Facilities"



Issue: Door entry/exit not ADA.

Fix: Reconfigure.

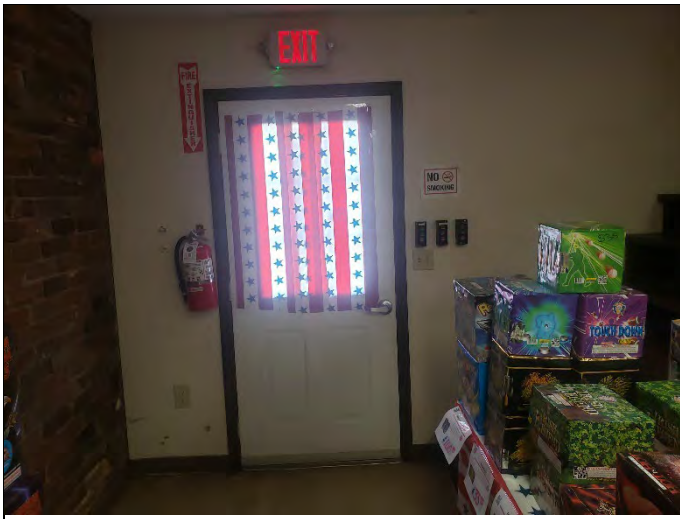
Reference Code: "Chapter 4: Accessible Routes"



Issue: No accessible fountain.

Fix: Provide an accessible fountain.

Reference Code: "Chapter 6: Plumbing Elements and Facilities"



Issue: Clearance at door obstructed.

Fix: Remove obstructions.

Reference Code: "Chapter 4: Accessible Routes"



Issue: Doors not accessible.

Fix: Reconfigure.

Reference Code: "Chapter 4: Accessible Routes"

Waterwater Plant Office



Issue: No ADA parking spots.

Fix: Provide accessible parking.

Reference Code: "Chapter 5: General Site and Building Elements"



Issue: Service counter is not ADA.

Fix: Lower counter.

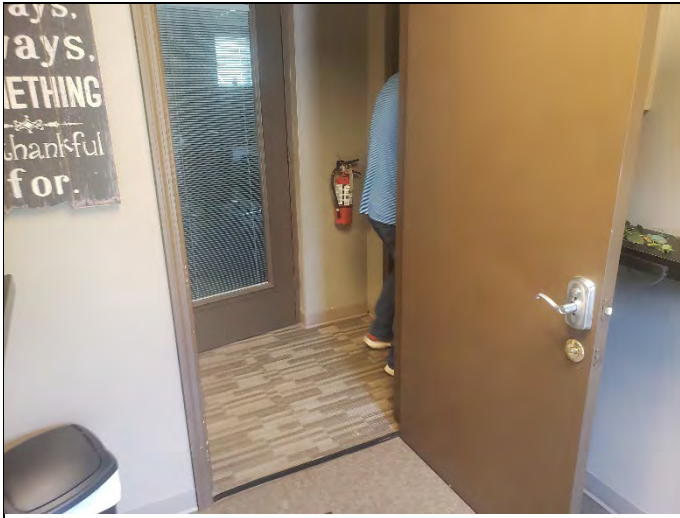
Reference Code: "Chapter 9: Built-in Elements"



Issue: Service counter is not ADA.

Fix: Lower counter.

Reference Code: "Chapter 9: Built-in Elements"



Issue: Door clearance not met.

Fix: Ensure door clearance meets ADA requirements.

Reference Code: "Chapter 4: Accessible Routes"



Issue: Bathroom does not meet ADA.

Fix: Reconfigure.

Reference Code: "Chapter 6: Plumbing Elements and Facilities"



Issue: Vanity is not ADA.

Fix: Replace with accessible vanity.

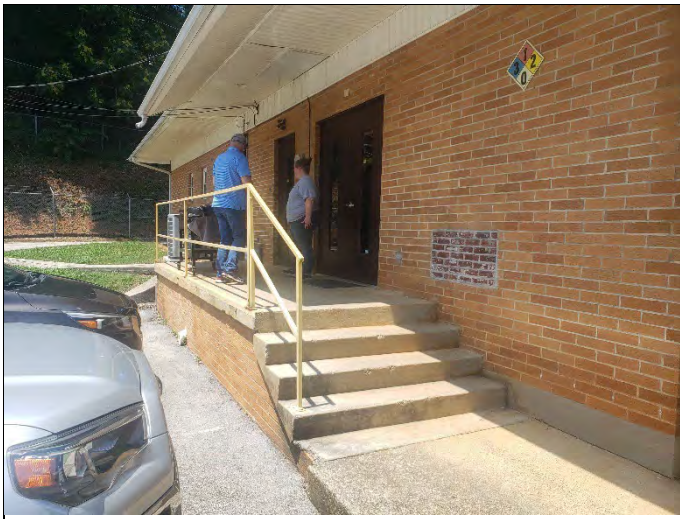
Reference Code: "Chapter 6: Plumbing Elements and Facilities"



Issue: Shower not accessible.

Fix: Reconfigure.

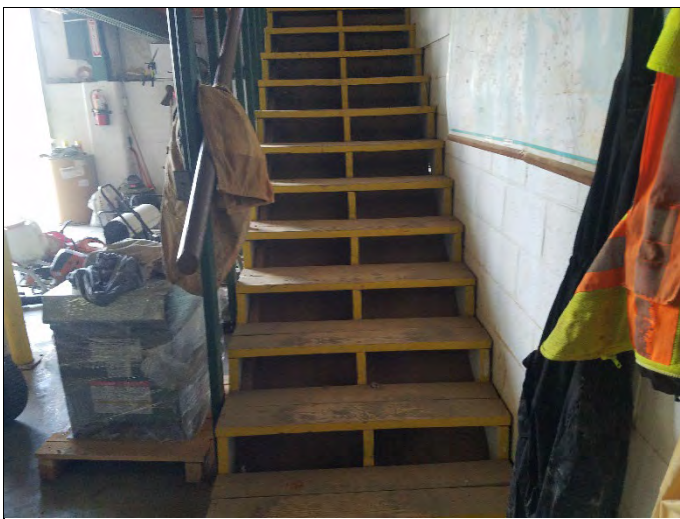
Reference Code: "Chapter 6: Plumbing Elements and Facilities"



Issue: No handrail.

Fix: Provide a handrail.

Reference Code: "Chapter 5: General Site and Building Elements"



Issue: Stairs not accessible.

Fix: Reconfigure.

Reference Code: "Chapter 5: General Site and Building Elements"



Issue: Bathroom not accessible.

Fix: Reconfigure.

Reference Code: "Chapter 6: Plumbing Elements and Facilities"



Issue: Bathroom not accessible.

Fix: Reconfigure.

Reference Code: "Chapter 6: Plumbing Elements and Facilities"

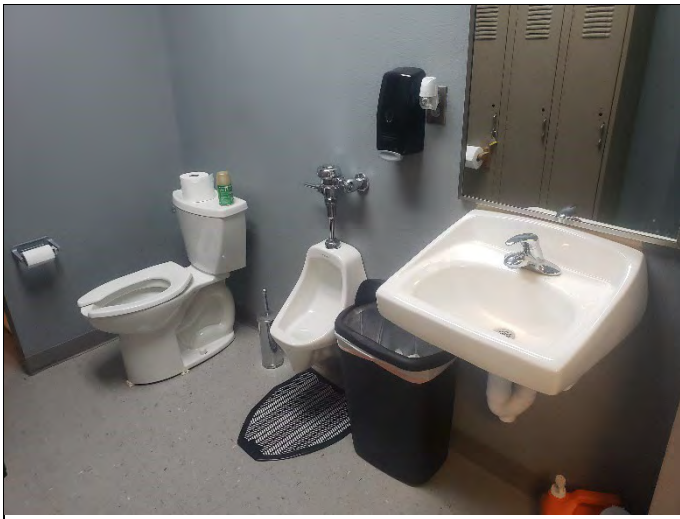
Wastewater Plant Lab



Issue: Stairs do not meet ADA stair requirements.

Fix: Provide accessible stairs.

Reference Code: "Chapter 5: General Site and Building Elements"



Issue: Bathroom not ADA.

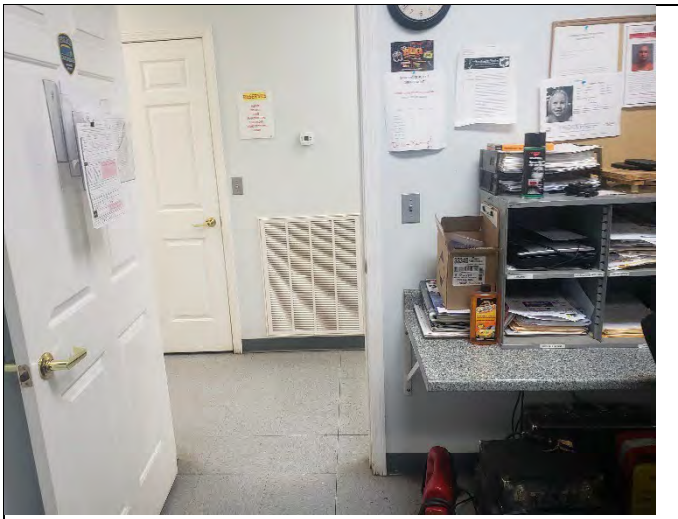
Fix: Reconfigure.

Reference Code: "Chapter 6: Plumbing Elements and Facilities"

Public Works/Police Station



Issue: Entryway not ADA.
Fix: Provide an accessible entry.
Reference Code: "Chapter 4: Accessible Routes"



Issue: Door clearance is not met.
Fix: Meet ADA clearances.
Reference Code: "Chapter 4: Accessible Routes"



Issue: Service counter does not meet ADA height requirements.
Fix: Move counter lower or provide an accessible portion.
Reference Code: "Chapter 9: Built-in Elements"



Issue: Service counter does not meet ADA height requirements.

Fix: Move counter lower or provide an accessible portion.

Reference Code: "Chapter 9: Built-in Elements"



Issue: Bathroom not ADA.

Fix: Reconfigure.

Reference Code: "Chapter 6: Plumbing Elements and Facilities"



Issue: Fountain is not accessible.

Fix: Provide an additional lower fountain.

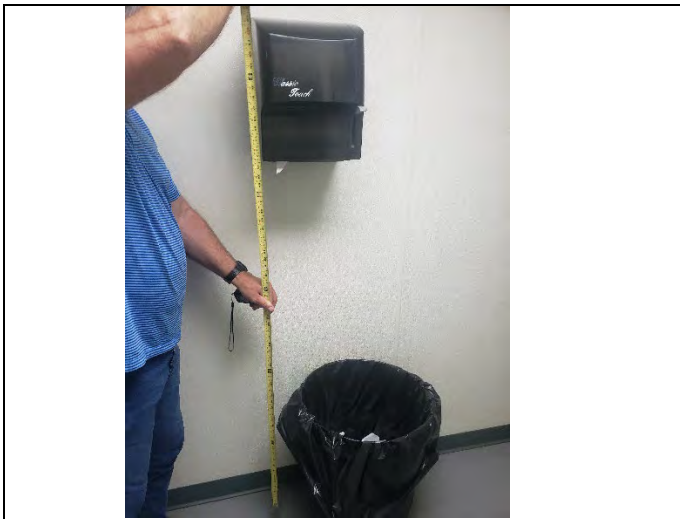
Reference Code: "Chapter 6: Plumbing Elements and Facilities"



Issue: Fountain is not accessible.

Fix: Provide an additional lower fountain.

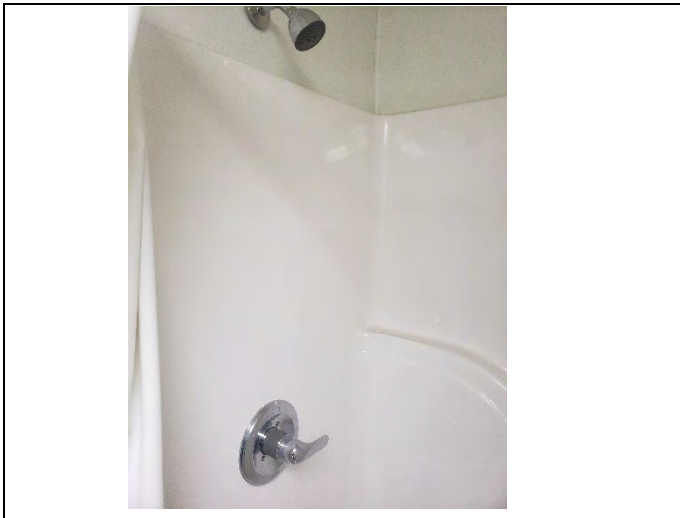
Reference Code: "Chapter 6: Plumbing Elements and Facilities"



Issue: Mounted too high.

Fix: Mount lower within ADA reach limits.

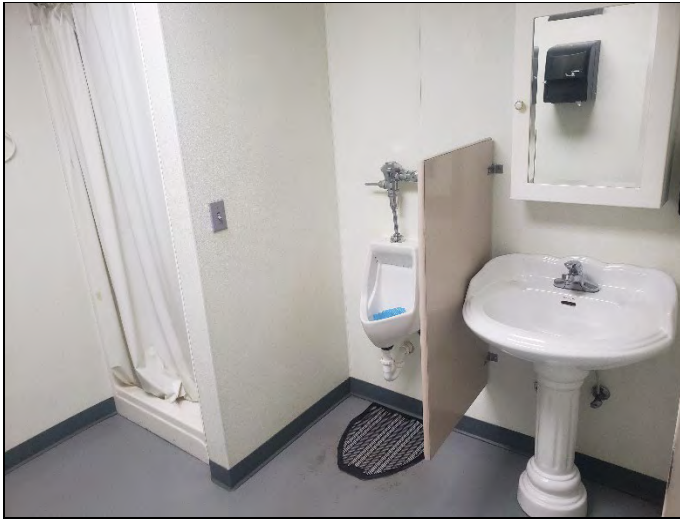
Reference Code: "Chapter 3: Building Blocks"



Issue: Shower is not accessible.

Fix: Reconfigure.

Reference Code: "Chapter 6: Plumbing Elements and Facilities"



Issue: Shower is not accessible. Ensure bottom of mirror is 40" max per ADA.

Fix: Reconfigure.

Reference Code: "Chapter 6: Plumbing Elements and Facilities"

Fire Station #1



Issue: No accessible parking.

Fix: Provide accessible parking.

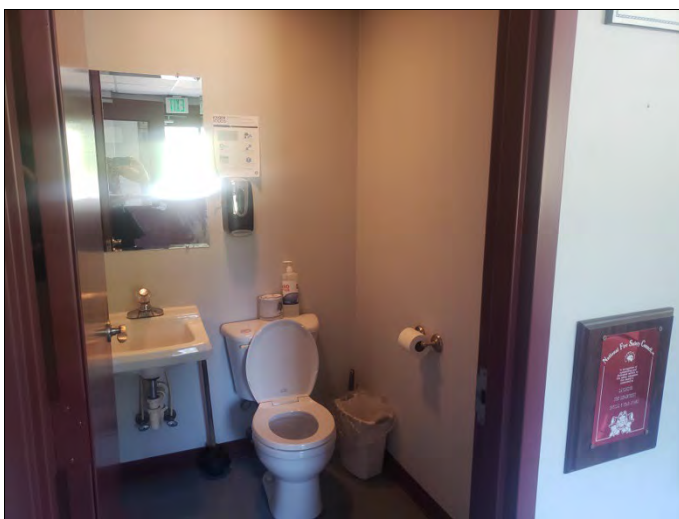
Reference Code: "Chapter 5: General Site and Building Elements"



Issue: Entrance not accessible.

Fix: Provide accessible entry.

Reference Codes: "Chapter 2: Scoping Requirements" and "Chapter 7: Communication Elements"



Issue: Restroom does not meet ADA standards for clearance and accessibility.

Fix: Reconfigure.

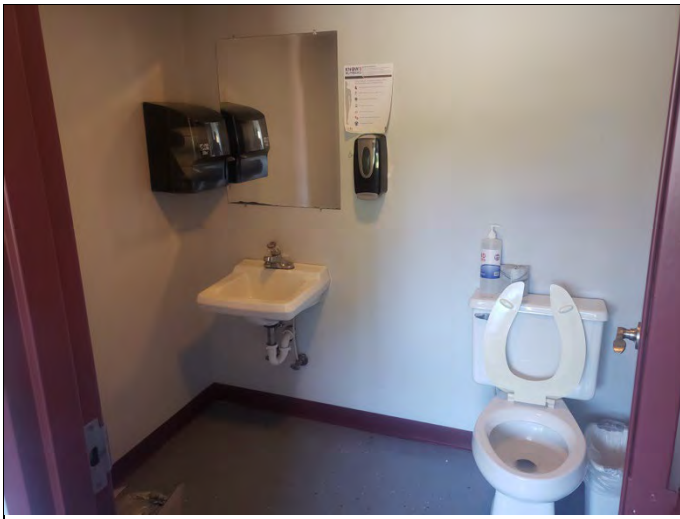
Reference Code: "Chapter 6: Plumbing Elements and Facilities"



Issue: Restroom is not ADA accessible.

Fix: Reconfigure.

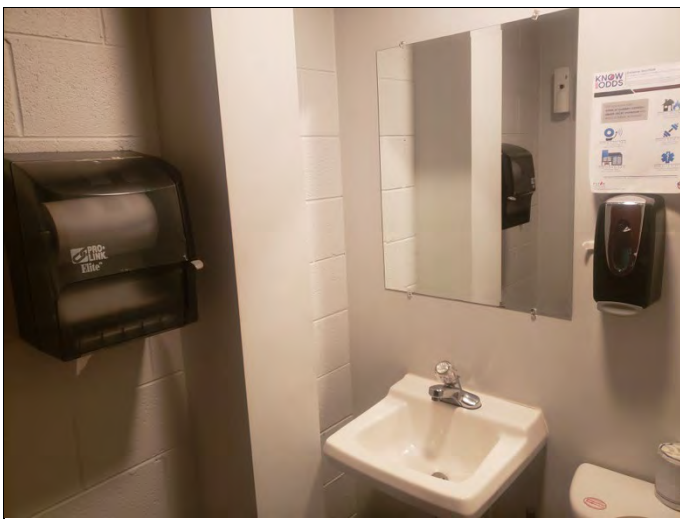
Reference Code: "Chapter 6: Plumbing Elements and Facilities"



Issue: Restroom is not ADA accessible.

Fix: Reconfigure.

Reference Code: "Chapter 6: Plumbing Elements and Facilities"



Issue: No ADA requirements are met.

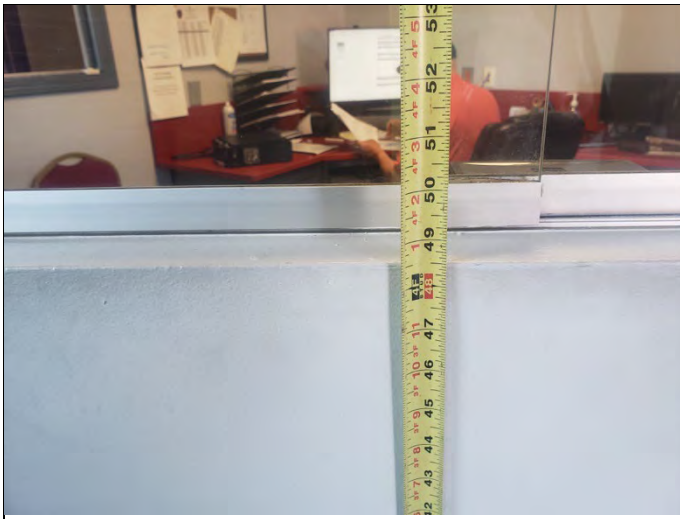
Fix: Demolish and build new within ADA requirements.

Reference Code: "Chapter 6: Plumbing Elements and Facilities"



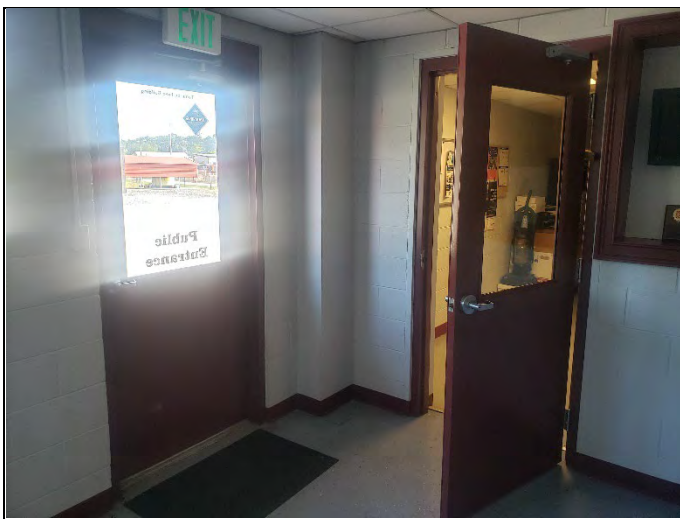
Issue: Counter is too high.
Fix: Install an ADA counter.

Reference Code: "Chapter 9: Built-in Elements"



Issue: Counter is too high.
Fix: Install an ADA counter.

Reference Code: "Chapter 9: Built-in Elements"



Issue: Door swing encroaches on exit door clearance.
Fix: Reconfigure.

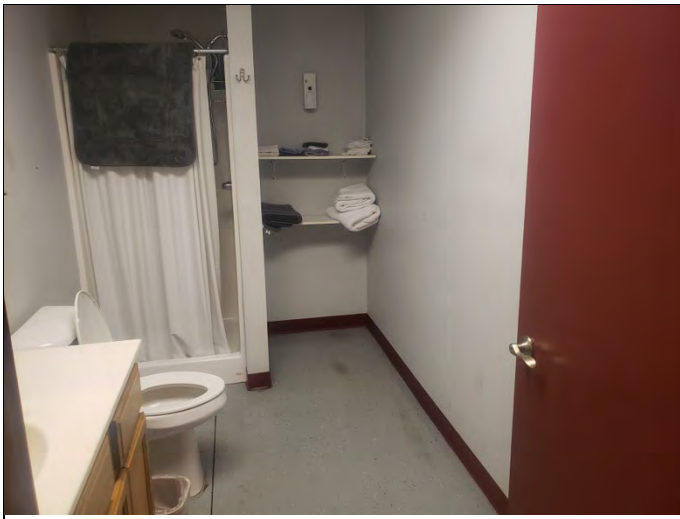
Reference Code: "Chapter 4: Accessible Routes"



Issue: Kitchen is not accessible.

Fix: Reconfigure.

Reference Code: "Chapter 8: Special Rooms, Spaces, and Elements"



Issue: Bathroom not accessible.

Fix: Reconfigure.

Reference Code: "Chapter 6: Plumbing Elements and Facilities"



Issue: Bathroom not accessible.

Fix: Reconfigure.

Reference Code: "Chapter 6: Plumbing Elements and Facilities"



Issue: No turnaround.

Fix: Reconfigure.

Reference Code: "Chapter 3: Building Blocks"

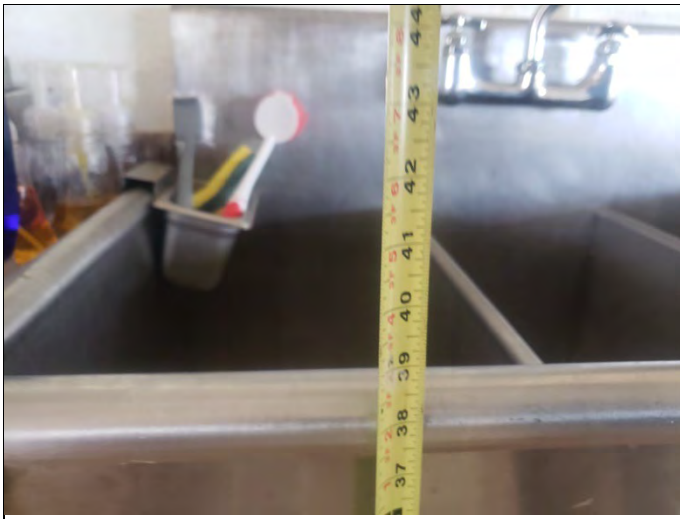
Baseball Concession / Restrooms Upper Fields



Issue: Employee area snack bar not accessible.

Fix: Reconfigure.

Reference Codes: "Chapter 8: Special Rooms, Spaces, and Elements" and "Chapter 9: Built-in Elements"



Issue: Employee area snack bar not accessible.

Fix: Reconfigure.

Reference Code: "Chapter 8: Special Rooms, Spaces, and Elements"



Issue: Employee area snack bar not accessible.

Fix: Reconfigure.

Reference Code: "Chapter 8: Special Rooms, Spaces, and Elements"



Issue: Service counter and employee areas are not at ADA required height.

Fix: Reconfigure.

Reference Code: "Chapter 9: Built-in Elements"



Issue: Second floor not accessible.

Fix: Provide appropriate accessible access.

Reference Code: "Chapter 5: General Site and Building Elements"



Issue: Second floor not accessible.

Fix: Provide appropriate accessible access.

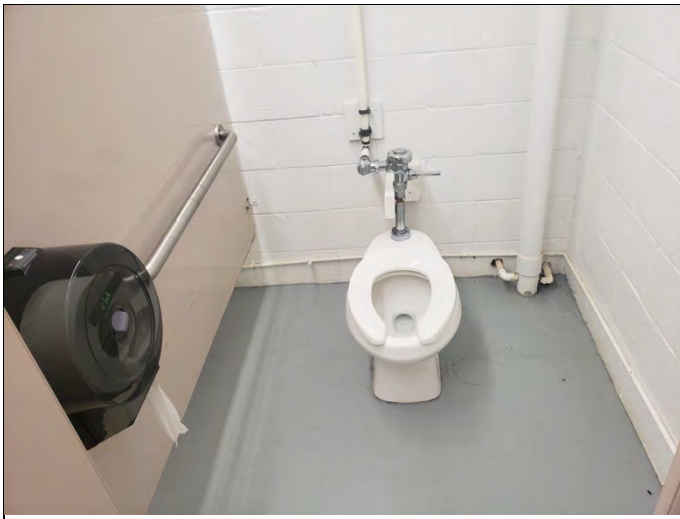
Reference Code: "Chapter 5: General Site and Building Elements"



Issue: Sink is mounted too high.

Fix: Reconfigure per.

Reference Code: "Chapter 6: Plumbing Elements and Facilities"



Issue: Not ADA accessible.

Fix: Reconfigure.

Reference Code: "Chapter 6: Plumbing Elements and Facilities"



Issue: Not ADA accessible.

Fix: Reconfigure.

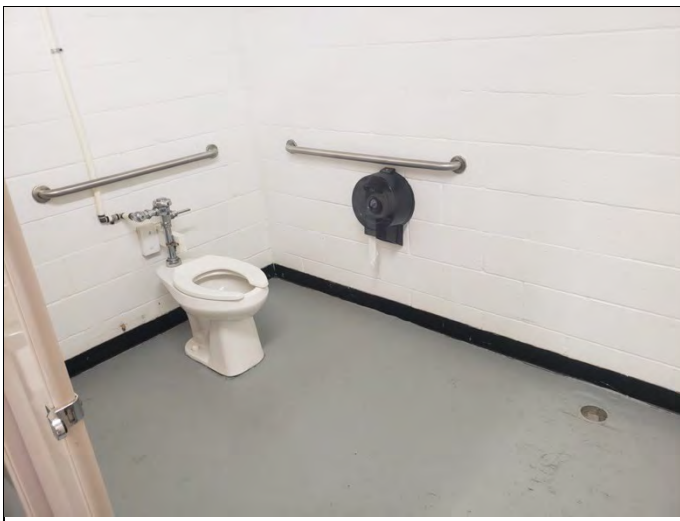
Reference Code: "Chapter 6: Plumbing Elements and Facilities"



Issue: Door clearance encroached.

Fix: Remove wooden structure.

Reference Code: "Chapter 4: Accessible Routes"



Issue: Not ADA accessible.

Fix: Reconfigure.

Reference Code: "Chapter 6: Plumbing Elements and Facilities"

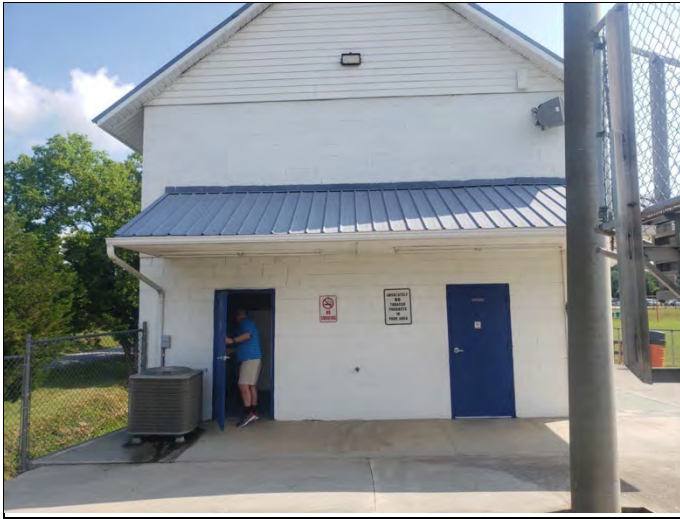


Issue: Sink is too high.

Fix: Mount lower.

Reference Code: "Chapter 6: Plumbing Elements and Facilities"

Football Concession / Restrooms



Issue: Both restroom entrances are not accessible.

Fix: Reconfigure.

Reference Code: "Chapter 4: Accessible Routes"



Issue: No ADA accessible toilet stall.

Fix: Reconfigure restroom to allow for an accessible stall.

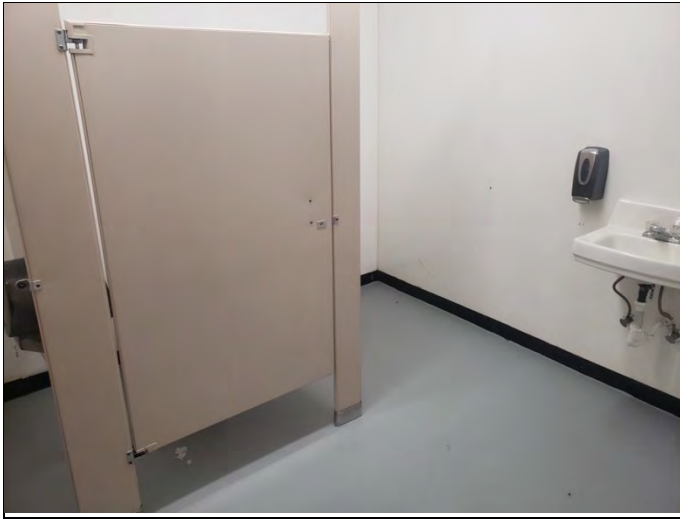
Reference Code: "Chapter 6: Plumbing Elements and Facilities"



Issue: Sink is mounted too high.

Fix: Mount lower.

Reference Code: "Chapter 6: Plumbing Elements and Facilities"



Issue: No ADA accessible toilet stall and no mirror.

Fix: Reconfigure restroom to allow for an accessible stall and add a mirror.

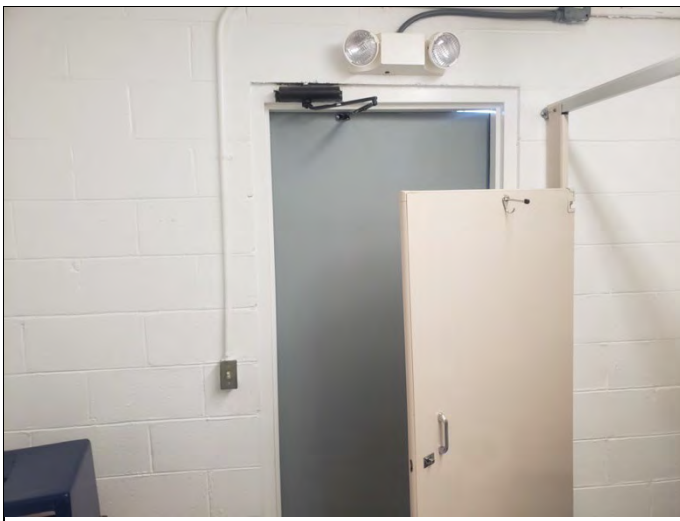
Reference Code: "Chapter 6: Plumbing Elements and Facilities"



Issue: Sink is mounted too high.

Fix: Mount lower.

Reference Code: "Chapter 6: Plumbing Elements and Facilities"



Issue: No accessible entry/exit.

Fix: Reconfigure.

Reference Code: "Chapter 6: Plumbing Elements and Facilities"



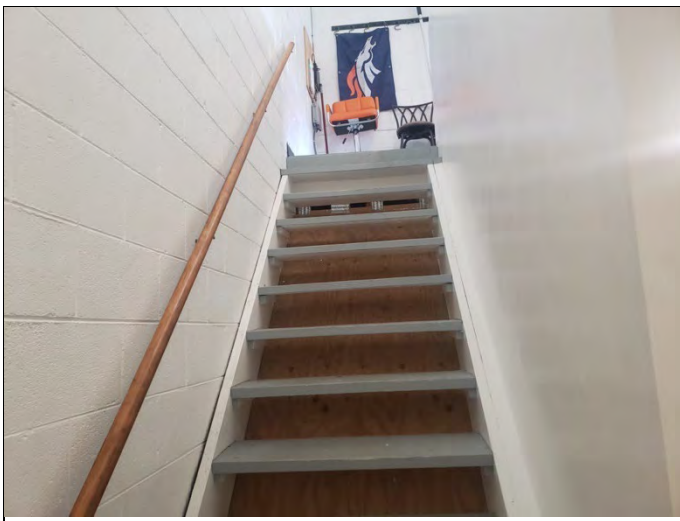
Issue: Service counters are too high.
Fix: Reconfigure.

Reference Code: "Chapter 9: Built-in Elements"



Issue: Service counters are too high.
Fix: Reconfigure.

Reference Code: "Chapter 9: Built-in Elements"



Issue: Stairs are too tall and not accessible.
Fix: Reconfigure.

Reference Code: "Chapter 5: General Site and Building Elements"

Football Ticket Booth



Issue: Service counters are too high.

Fix: Reconfigure.

Reference Code: "Chapter 9: Built-in Elements"



Issue: Service counters are too high.

Fix: Reconfigure.

Reference Code: "Chapter 9: Built-in Elements"

Baseball Concession/Restrooms Lower Fields



Issue: ADA accessible aisle is not clearly marked.

Fix: Re-stripe.

Reference Code: "Chapter 5: General Site and Building Elements"



Issue: Sink is mounted too high.

Fix: Reconfigure.

Reference Code: "Chapter 6: Plumbing Elements and Facilities"



Issue: Mounted too high.

Fix: Reconfigure.

Reference Code: "Chapter 6: Plumbing Elements and Facilities"



Issue: Sink is mounted too high.
Fix: Reconfigure.

Reference Code: "Chapter 6: Plumbing Elements and Facilities"



Issue: Service counters are too high.
Fix: Reconfigure.

Reference Code: "Chapter 9: Built-in Elements"



Issue: Service counters are too high.
Fix: Reconfigure.

Reference Code: "Chapter 9: Built-in Elements"

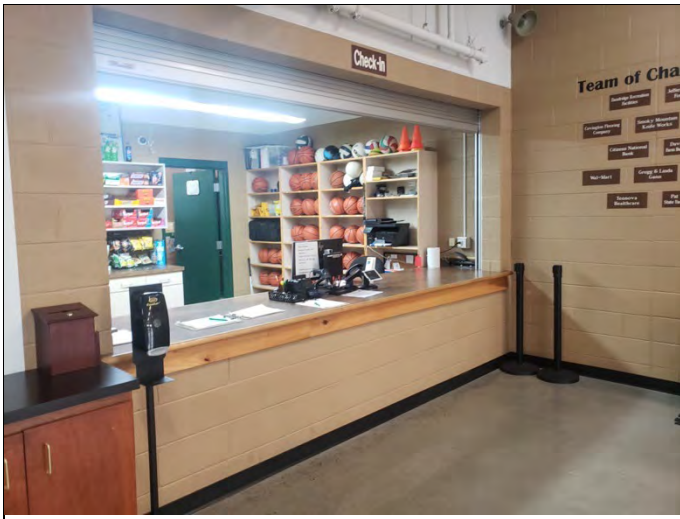
Community Center



Issue: Sidewalk is obstructed

Fix: Install wheel stops.

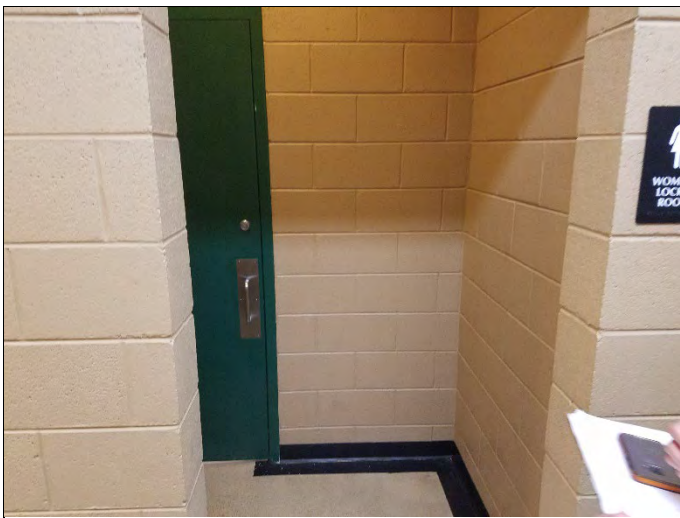
Reference Code: "Chapter 3: Building Blocks"



Issue: Counter is too high.

Fix: Install a lower transaction counter.

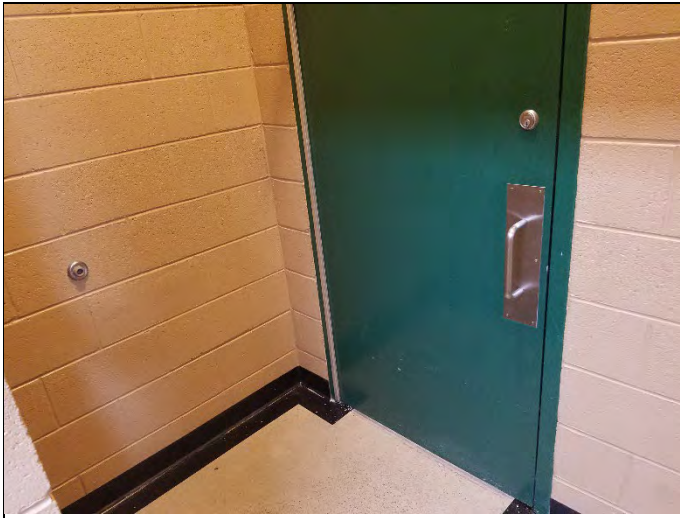
Reference Code: "Chapter 9: Built-in Elements"



Issue: Ensure proper door clearance.

Fix: If not within ADA requirements, reconfigure.

Reference Code: "Chapter 4: Accessible Routes"



Issue: Ensure proper door clearance.

Fix: If not within ADA requirements, reconfigure.

Reference Code: "Chapter 4: Accessible Routes"

Picnic Pavillion



Issue: No ADA parking spaces.

Fix: Provide accessible spaces.

Reference Codes: "Chapter 3: Building Blocks" and "Chapter 5: General Site and Building Elements"



Issue: No accessible seating.

Fix: Provide accessible seating.

Reference Code: "Chapter 2: Scoping Requirements"